

Test Report

No. CANML1616692501

Date: 29 Aug 2016

Page 1 of 5

DONGGUAN WEIMEI HIGH-POLYMER MATERIAL INDUSTRY CO.,LTD

NO.8, FIVE STREET,GOLD SAND HILLS VILLAGE INDUSTRIAL ZONE,DALANG TOWN,DONGGUAN CITY,GUANGDOANG PROVINCE

The following sample(s) was/were submitted and identified on behalf of the clients as : SILICONE RUBBER DW-6650

SGS Job No. : SZIN1608011657PC - SZ
 Tested Sample Info. : 6650
 Client Ref. Info. : See remark
 Date of Sample Received : 24 Aug 2016
 Testing Period : 24 Aug 2016 - 29 Aug 2016
 Test Requested : Selected test(s) as requested by client.
 Test Method : Please refer to next page(s).
 Test Results : Please refer to next page(s).

Signed for and on behalf of
 SGS-CSTC Standards Technical Services Co., Ltd. Guangzhou Branch

Merry

Merry Lv
 Approved Signatory



SGS-CSTC Standards Technical Services Co., Ltd.
 Guangzhou Branch Testing Center Chemical Laboratory.

Unless otherwise agreed in writing, this document is issued by the Company subject to its General Conditions of Service printed overleaf, available on request or accessible at <http://www.sgs.com/en/Terms-and-Conditions.aspx> and, for electronic format documents, subject to Terms and Conditions for Electronic Documents at <http://www.sgs.com/en/Terms-and-Conditions/Terms-e-Documents.aspx>. Attention is drawn to the limitation of liability, indemnification and jurisdiction issues defined therein. Any holder of this document is advised that information contained hereon reflects the Company's findings at the time of its intervention only and within the limits of Client's instructions, if any. The Company's sole responsibility is to its Client and this document does not exonerate parties to a transaction from exercising all their rights and obligations under the transaction documents. This document cannot be reproduced except in full, without prior written approval of the Company. Any unauthorized alteration, forgery or falsification of the content or appearance of this document is unlawful and offenders may be prosecuted to the fullest extent of the law. Unless otherwise stated the results shown in this test report refer only to the sample(s) tested.

Attention: To check the authenticity of testing /inspection report & certificate, please contact us at telephone: (86-755) 8307 1443, or email: CN.Doccheck@sgs.com

198 Kezhu Road, Sciotech Park Guangzhou Economic & Technology Development District, Guangzhou, China 510663 t (86-20) 82155555 f (86-20) 82075113 www.sgs.com.cn
 中国·广州·经济技术开发区科学城科珠路198号 邮编: 510663 t (86-20) 82155555 f (86-20) 82075113 e sgs.china@sgs.com

Test Report

No. CANML1616692501

Date: 29 Aug 2016

Page 2 of 5

Test Results :

Test Part Description :

Specimen No.	SGS Sample ID	Description
SN1	CAN16-166925.001	Translucent soft material

Remarks :

- (1) 1 mg/kg = 1 ppm = 0.0001%
- (2) MDL = Method Detection Limit
- (3) ND = Not Detected (< MDL)
- (4) "-" = Not Regulated

Bisphenol A

Test Method : With reference to Part II Section D2 of Testing Methods for Foodstuffs, Implements, Containers and Packaging, Toys, Detergents, JETRO, Japan External Trade Organization, 2009 (Dichloromethane extraction by ultrasonic bath). Analysis was performed by HPLC-MS

<u>Test Item(s)</u>	<u>Unit</u>	<u>MDL</u>	<u>001</u>
Total content of Bisphenol A	mg/kg	0.1	ND



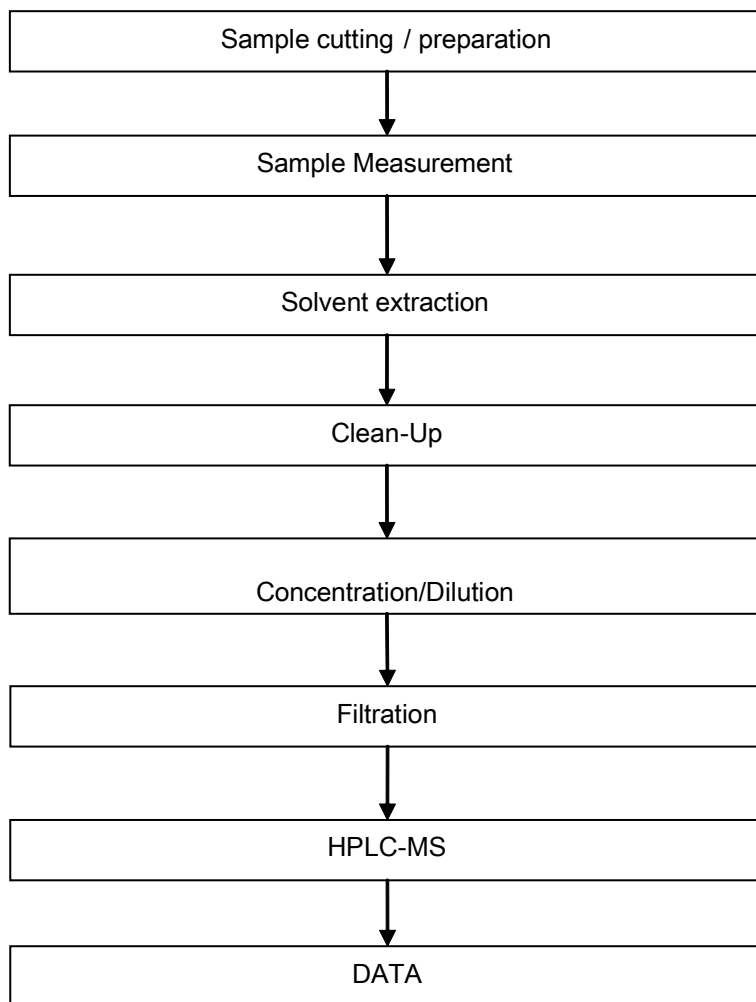
Imported high temperature glue1#50℃, Imported high temperature glue1#70℃, Imported high temperature glue2#50℃, Imported high temperature glue2#70℃, Imported high temperature glue3#50℃, Imported high temperature glue3#70℃,
DW-5150, DW-5165, DW-6605,DW-6610,DW-6620,
DW-6630,DW-6640,DW-6650,DW-6660,DW-6670,DW-6680,DW-6685, DW-6690,
DW-6611,DW-6621,DW-6631,DW-6641,DW-6651,
DW-6661,DW-6671,DW-6681,DW-6691
DW-6610S,DW-6620S,DW-6630S,DW-6640S,DW-6650S,DW-6660S,DW-6670S,DW-6680S,
DW-6620F,DW-6630F,DW-6640F,DW-6650F,DW-6660F,DW-6670F,DW-6680F,
DW-6630J,DW-6640J,DW-6650J,DW-6660J,DW-6670J,DW-6680J,
DW-6630B,DW-6640B,DW-6650B,DW-6660B,DW-6670B,DW-6680B,
DW-6630U,DW-6640U,DW-6650U,DW-6660U,DW-6670U,DW-6680U,
DW-9910,DW-9920,DW-9930,DW-9940,DW-9950,DW-9960,DW-9970,DW-9980,DW-9990
DW-9911,DW-9921,DW-9931,DW-9941,DW-9951,DW-9961,DW-9971,DW-9981,
Z-130,Z-140,Z-150,Z-160,Z-170,Z-180,
Z-131, Z-141,Z-151, Z-161, Z-171, Z-181,
G-130, G-140, G-150, G-160, G-170, G-180, G-131,G-141,G-151,G-161,G-171,G-181



ATTACHMENTS

BPA Testing Flow Chart

- 1) Name of the person who made testing : Zhihong Wang
- 2) Name of the person in charge of testing : Qiong Liu



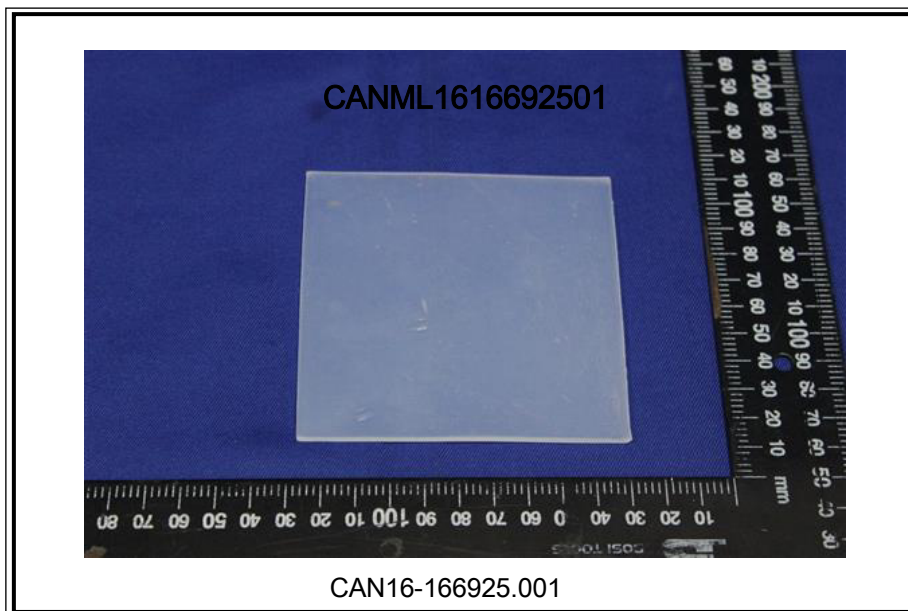
Test Report

No. CANML1616692501

Date: 29 Aug 2016

Page 5 of 5

Sample photo:



SGS authenticate the photo on original report only

*** End of Report ***



SGS-CSTC Standards Technical Services Co., Ltd.
Guangzhou Branch Testing Center Chemical Laboratory

Unless otherwise agreed in writing, this document is issued by the Company subject to its General Conditions of Service printed overleaf, available on request or accessible at <http://www.sgs.com/en/Terms-and-Conditions.aspx> and, for electronic format documents, subject to Terms and Conditions for Electronic Documents at <http://www.sgs.com/en/Terms-and-Conditions/Terms-e-Documents.aspx>. Attention is drawn to the limitation of liability, indemnification and jurisdiction issues defined therein. Any holder of this document is advised that information contained hereon reflects the Company's findings at the time of its intervention only and within the limits of Client's instructions, if any. The Company's sole responsibility is to its Client and this document does not exonerate parties to a transaction from exercising all their rights and obligations under the transaction documents. This document cannot be reproduced except in full, without prior written approval of the Company. Any unauthorized alteration, forgery or falsification of the content or appearance of this document is unlawful and offenders may be prosecuted to the fullest extent of the law. Unless otherwise stated the results shown in this test report refer only to the sample(s) tested.

Attention: To check the authenticity of testing /inspection report & certificate, please contact us at telephone: (86-755) 8307 1443, or email: CN.Doccheck@sgs.com

198 Kazhu Road, Sciotech Park Guangzhou Economic & Technology Development District, Guangzhou, China 510663 t (86-20) 82155555 f (86-20) 82075113 www.sgs.com.cn
中国·广州·经济技术开发区科学城科珠路198号 邮编: 510663 t (86-20) 82155555 f (86-20) 82075113 e sgs.china@sgs.com